

# Y10 Parent/Carer Information Evening



Resilience



Pride



Respect



Ambition



Responsibility

Vision – Be Exceptional



# Tonight...



- Key dates for the year ahead
- How you can support your child at home
- How you can support your child in school
- What to expect from Year 10



Resilience



Pride



Respect



Ambition



Responsibility

**Vision – Be Exceptional**

# Welcome



**Mr M Kilgannon**  
**Assistant Vice Principal**

**Mrs C Alcock**  
**SENDCO**

**Miss L Collins**  
**Pastoral Learning Lead**

**Ms L Morgan**  
**Assistant SENDCO**

**Miss K Birks**  
**Learning Progress Manager**



Resilience



Pride



Respect



Ambition



Responsibility

**Vision – Be Exceptional**

# Academic Progress and Key Dates



- Parents Evening - Monday 15th April
- Data Collection 1 - week commencing November 13th
- Data Collection 2 - week commencing January 15th
- Data Collection 3 - week commencing July 15th
- Trial Exams - week commencing Monday 24th June 2023



Resilience



Pride



Respect



Ambition



Responsibility

**Vision – Be Exceptional**

# Curriculum Design at Aston



- **The curriculum allows more flexibility**- students are timetabled in half year groups and can move between sets as and when their teacher feels appropriate for their academic progress.
- The curriculum design at Aston now allows students to have **equal access to curriculum** pathways, sets and opportunities moving through the school.
- The curriculum design **allows for academic changes** in your child as they journey through their final year.



Resilience



Pride



Respect



Ambition



Responsibility

**Vision – Be Exceptional**

# Y10 Curriculum



To ensure that the academy delivers an **ambitious curriculum** that continues to **raise aspirations and standards for all groups of learners** in every school year.

## *Core:*

English Language  
English Literature  
Mathematics  
Science (Double/ Triple)  
RE

## *EBacc:*

MFL (French/Spanish)  
History  
Geography

## *Options subjects:*

Business  
IT  
Sociology  
Drama  
PE  
Drama  
Music  
Art  
DT/ Textiles  
Hospitality and Catering  
Health and Social Care



Resilience



Pride



Respect



Ambition



Responsibility

**Vision – Be Exceptional**

# Assessment and Data Reports



- All students in Key Stage 4 (Y10/11) will be assessed using the same process:
  - Classwork/live marking- Assessment for learning, continuous in class
  - Milestone assessments in class (formative, low stakes assessments)
  - Summative Assessments at the end of a learning journey- these include Trial Exams
- Data Reports will be sent out three times in Y10 where, for each subject they are studying, students will get the following:
  - Estimated grade
  - Character in the Classroom score



Resilience



Pride



Respect



Ambition



Responsibility

**Vision – Be Exceptional**

# Y10 Trial Exams



- Trial Exams - w/c 24th June 2024
  - Important in the learning journey of your child.
  - Allow reflection of learning when assessed in a formal setting.
  - Ensures students understand the process and are used to accessing the support.
  - Relieves anxiety regarding the exam process and builds resilience.



Resilience



Pride



Respect



Ambition



Responsibility

**Vision – Be Exceptional**



# Exam Support for Your Child



- Revision Booklet
- Online resources shared through Google Classroom
- Exam boosters- day before the exam
- Exam breakfasts
- Exam briefings before every exam
- Feedback and response lessons



Resilience



Pride



Respect



Ambition



Responsibility

**Vision – Be Exceptional**

# The Importance of Attendance



Resilience



Pride



Respect



Ambition



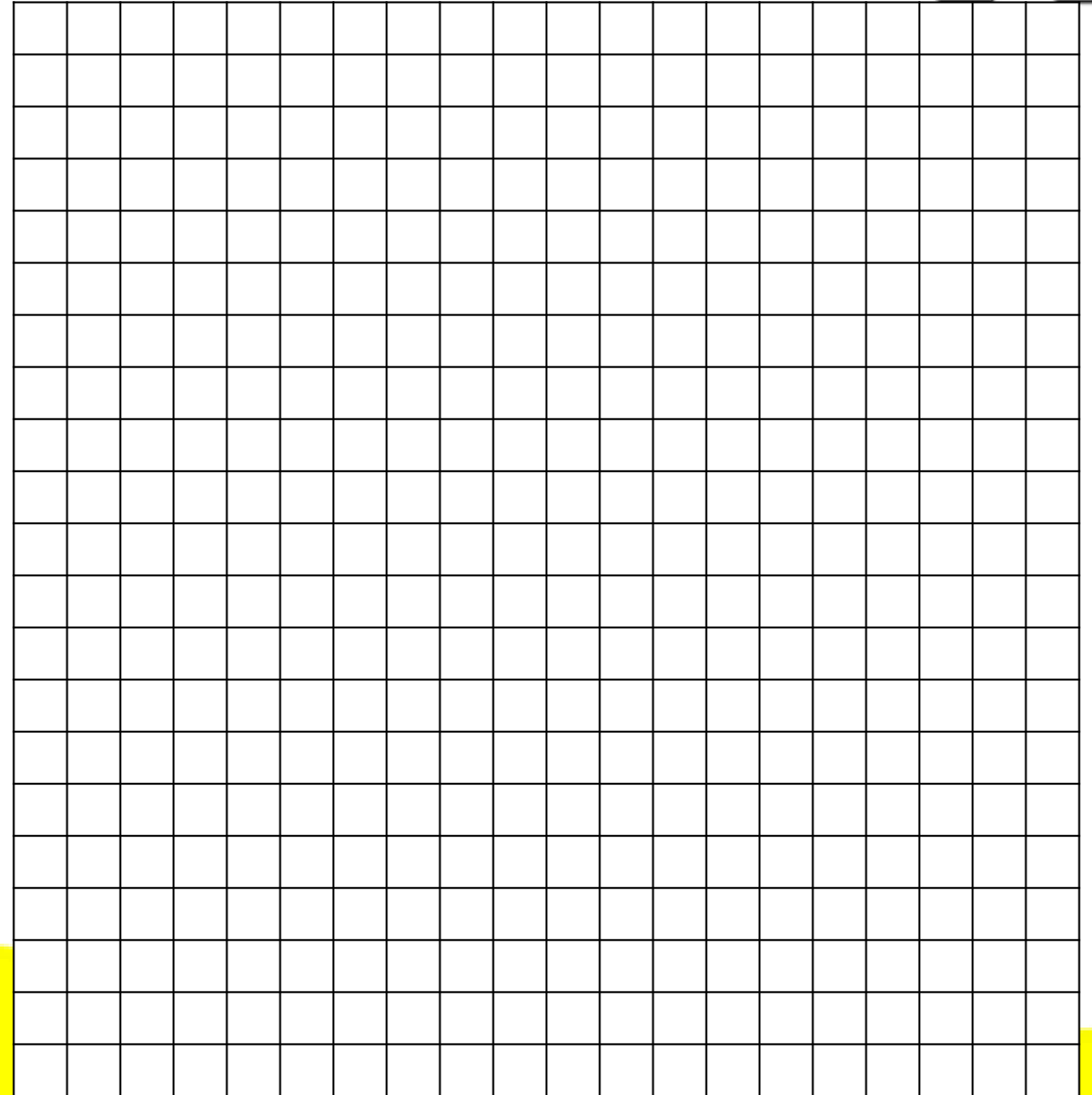
Responsibility

Vision – Be Exceptional



# 100% Attendance

- ✓ Each square represents a school week.
- ✓ Square one is your child's first week in Reception.
- ✓ The final square is the week of their final GCSE exam.



Resilience



Pride



Respect



Ambition



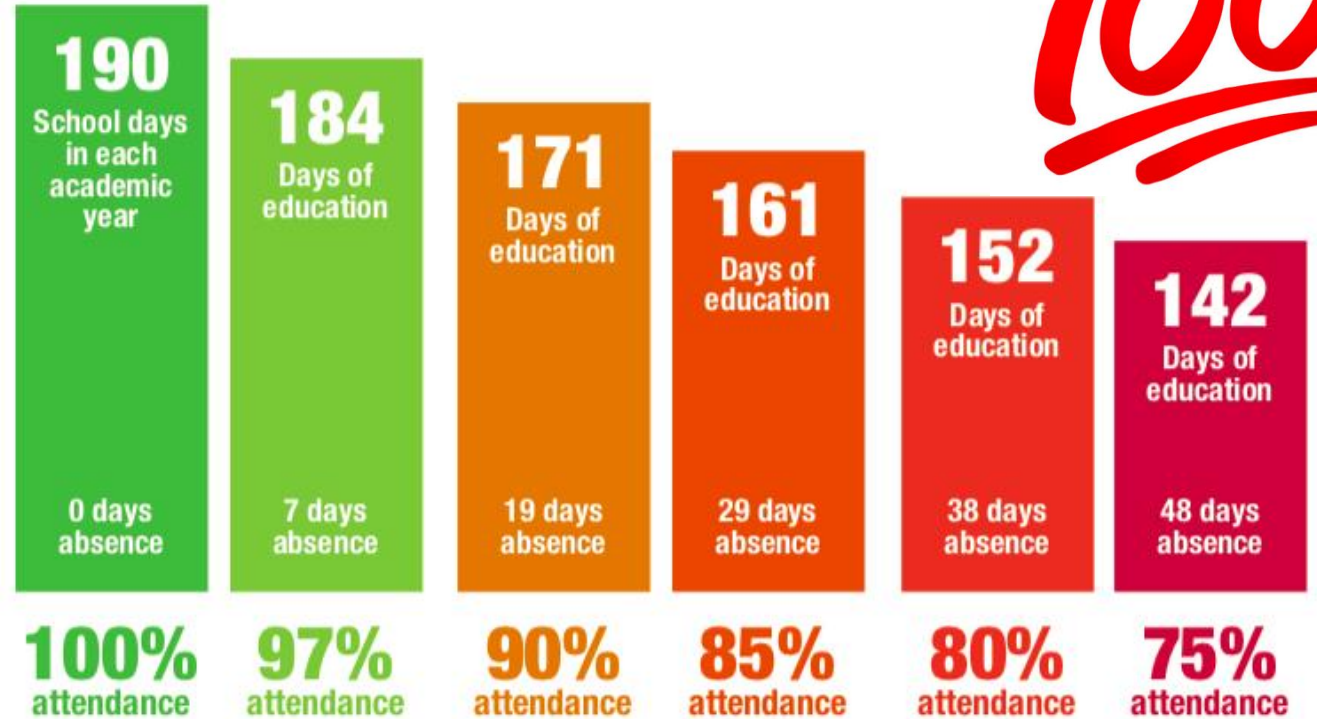
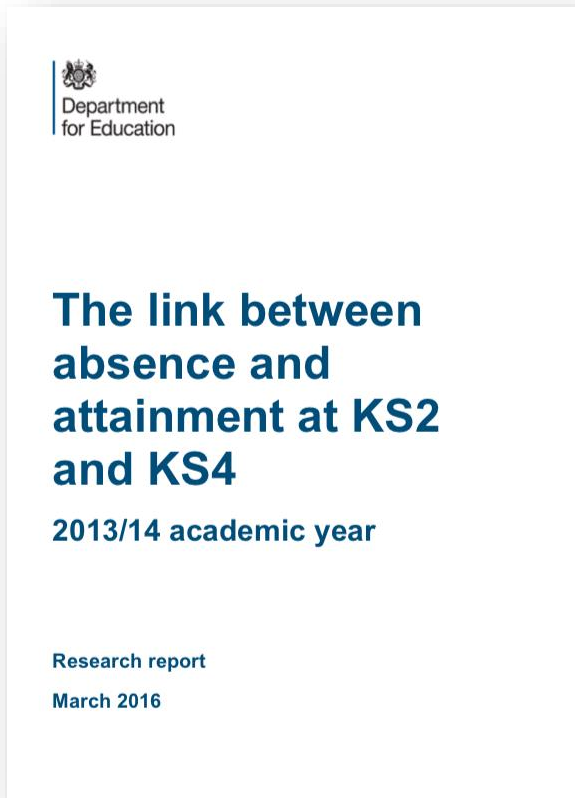
Responsibility



# The Importance of 100% Attendance

ASTON

**100**



Research Report - Link between absence and attainment



Resilience



Pride



Respect



Ambition



Responsibility

**Vision – Be Exceptional**

# The Importance of 100% Attendance



## Key points for Y10 Parents:

- Please get in touch if you are concerned that illness or injury may result in non-attendance; there is lots we can do to support your child remaining in school.
- Year 10s will be working hard on new content in every single lesson; one missed day means 5 hours of lost learning.
- Independent 'catch-up' will never match being in front of specialist teachers.

**100**

**Attend  
and  
Achieve**



Resilience



Pride



Respect



Ambition



Responsibility

**Vision – Be Exceptional**

# Student Wellbeing

ASTON

## Help & Support

- Talking to people can make a big difference. Talk to friends, family, teachers, form tutors and other staff in school.
- Remember to try and live a healthy lifestyle - get enough sleep, eat well and exercise.
- Keeping things to yourself will not solve the problem.
- Practice mindfulness, or other techniques that allow you to relax.
- **Kooth are a free support provision, with a variety of tools to help support your child.**



Resilience



Pride



Respect



Ambition



Responsibility

**Vision – Be Exceptional**





# Extra Curricular Clubs

Term 1 Extra Curricular Letter was sent to you on Friday 8th September with clubs starting from last week.

This includes - Sports Clubs, Subject Clubs and House Activities.

A new letter will be sent to you at the start of each term with the new clubs and opportunities available.

All clubs are FREE and run from 3:10pm - 4:10pm with some fixtures slightly longer - please encourage your child to come and get involved.



Resilience



Pride



Respect



Ambition



Responsibility

**Vision – Be Exceptional**



# Core Subject Information: Maths, English, Science



Resilience



Pride



Respect



Ambition



Responsibility

Vision – Be Exceptional



# Y10 Maths Curriculum

ASTON

Algebra

Statistics

Geometry

Number

Ratio

- In year 10 students will study a vast range of topics within our 5 golden threads.
- Topics will build on learning from KS3. The topics belong to our 5 golden threads and they are mixed up throughout the year to help balance students exposure to the various areas of maths.
- Students will sit regular milestones every couple of weeks in maths, enabling us to monitor progress closely and address any gaps in knowledge.
- Exam Board: OCR. Tiers: Foundation (Grades 1 to 5) & Higher (Grades 3 to 9)



Resilience



Pride



Respect



Ambition



Responsibility

**Vision – Be Exceptional**

# Y10 Maths Curriculum

ASTON

Algebra

Statistics

Geometry

Number

Ratio

- Students will either be following Foundation, F/H Crossover or Higher this year to allow us to ensure they are entered at the correct tier for them to achieve best for them in Y11.
- Students are not just taught maths, they are taught the applications of the skills outside of the classroom and how they can be useful in everyday life and their future.
- Y10 students will have a full finance week in the final term of the year focusing on managing their finances and will conclude the week with a budgeting task.



Resilience



Pride



Respect



Ambition



Responsibility

**Vision – Be Exceptional**

# Calculators

ASTON

- A vital part of the student equipment list is a scientific calculator.
- 2 out of 3 GCSE Maths Papers will require use of a calculator. Lessons, milestones and assessments will reflect this.
- It is an expectation that students bring their own calculator every day.
- We recommend the **Casio FX83GT CW** at most supermarkets [released July 2023].
- Students with the Casio FX83GTX or Casio FX95 do not need to purchase new calculators.



Resilience



Pride



Respect



Ambition



Responsibility

Vision – Be Exceptional

# How can you support your child in Maths



- Catch up with your child about what they're learning about, and it's ok if they're finding something tricky - maths can be very difficult.
- Maths homework is moving to an online programme called Sparx. They will be set weekly homework - check in with them how they're getting on. They will be able to use their books to help them complete this as it runs alongside our curriculum. There are 100s of videos to help improve student understanding if they are finding a topic particularly challenging or to help extend their knowledge further.
- Communicate with us, we're happy to help. Use our learning journey on the website to see where you're child is at and if you need any support with previous topics or something coming up then get in touch.



Resilience



Pride



Respect



Ambition



Responsibility

**Vision – Be Exceptional**

# Y10 English Language Curriculum



Exam board: Eduqas

<b>Paper 1 - Reading – 40 marks – 1 hour</b>	<b>Writing – 40 marks – 45 minutes</b>
<p data-bbox="326 596 1024 645">Reading of an unseen fiction text</p> <p data-bbox="122 791 1228 973">Five reading questions to assess skills in information retrieval, commenting on the effect of language, and evaluating a statement</p>	<p data-bbox="1279 596 2415 645">Select one of four titles from options and write a story.</p> <p data-bbox="1727 791 1967 839">45 minutes</p> <p data-bbox="1381 988 2313 1102">Spelling, punctuation, and grammar marked alongside ideas, content, and vocabulary</p>



Resilience



Pride



Respect



Ambition



Responsibility

**Vision – Be Exceptional**

# Y10 English Language Curriculum



Exam board: Eduqas

<b>Paper 2 Reading – 40 marks – 1 hour</b>	<b>Writing – 40 marks – 1 hour</b>
<p data-bbox="338 639 988 675">Reading of two unseen non-fiction texts</p> <p data-bbox="193 805 1131 891">Six reading questions testing ability to understand writers' perspectives</p> <p data-bbox="129 1021 1195 1106">Assesses ability to compare, retrieve the correct information, and comment on the effect of language</p>	<p data-bbox="1569 639 2099 675">Two pieces of non-fiction writing</p> <p data-bbox="1523 805 2145 841">A letter, speech, article, review, report</p> <p data-bbox="1304 971 2364 1056">Marked for content, ideas, sense of purpose, how convincing the writing is, alongside spelling, punctuation, and grammar</p>



Resilience



Pride



Respect



Ambition



Responsibility

**Vision – Be Exceptional**

## Speaking and Listening

A 'Non-Exam Assessment' / 'Endorsement' has to also be completed to assess students' ability in speaking and listening.

This involves a five minute speaking presentation delivered by the student, alongside a series of questions.



Resilience



Pride



Respect



Ambition



Responsibility



# Y10 English Literature Curriculum



Exam board: Eduqas

English Literature Paper 1 – 2 hours -  
40% of GCSE

Shakespeare – ‘Macbeth’ – 1 hour	Poetry Anthology – 1 hour
2 questions	2 questions
One extract analysis	One analysis of a named poem and how ideas are presented
One whole play analysis	One comparison question between the named poem and a poem of choice from the anthology



Resilience



Pride



Respect



Ambition



Responsibility

**Vision – Be Exceptional**

# Y10 English Literature Curriculum



Exam board: Eduqas

English Literature Paper 2 – 2 hours 30 minutes – 60% of GCSE

'An Inspector Calls' – 45 minutes	19 <sup>th</sup> Century Prose – 'A Christmas Carol' or 'Jekyll and Hyde' – 45 minutes	Unseen Poetry – 1 hour
<p>1 question</p> <p>One essay question on an extract and the rest of the play</p>	<p>1 question</p> <p>One essay question on an extract and the rest of the novella</p>	<p>2 questions</p> <p>Q1 Comment on the first poem and how the poet presents their ideas</p> <p>Q2 – 40 minutes</p> <p>Compare the first poem with a second and how each poet presents their ideas</p>



Resilience



Pride



Respect



Ambition



Responsibility

**Vision – Be Exceptional**

# How can you support your child in English



## English Language:

Encouraging the reading of a wide variety of texts, both fiction and non-fiction - novels, short stories, newspapers, online blogs, reviews, opinion pieces

Completion of any incomplete classwork

Time for timed answers at home

Spelling practice

## English Literature:

Revision of quotations - Poetry anthology/An Inspector Calls

Online videos - YouTube - Mr Bruff/BBC Bitesize

Revision guides - second-hand online

Timed essay practice

Attending productions

Discussion of lesson content/ regularly reviewing classwork



Resilience



Pride



Respect



Ambition



Responsibility

**Vision – Be Exceptional**

# Y10 Science Curriculum

## Knowledge and skill structure around the Big Ideas in science

### 10Y and 10X AQA Combined Science (Trilogy)

### 10W and 10Z AQA Separate Sciences

2 GCSE graded from 3-3 to 9-9 on the higher tier and 1-1 to 5-5 on the foundation tier

3 GCSEs graded from 3-9 (H) and 1-5 (F)

6 Written papers- 2 Biology, 2 Chemistry and 2 Physics

1hr 15mins  
21 Required practicals

1hr 45mins  
28 Required practicals

## Key Dates

- Tiering decision are made in Y11



Resilience



Pride



Respect



Ambition



Responsibility

**Vision – Be Exceptional**

# How can you support your child in Science

ASTON

- Support them with beginning active revision now- make a timetable with small chunks of revision
- Check their exercise book and test them on what they've learnt
- Are homework booklets completed every week with maximum effort?
- Suggested revision guide - AQA Oxford Revise series
- Scientific calculator are needed in science too



Resilience



Pride



Respect



Ambition



Responsibility

**Vision – Be Exceptional**

# General support at home



- Discuss your child's learning with them - use the curriculum journeys as a starting point (website).
- Ensure your child has the correct equipment needed for school.
- Check your child's planner for home learning, deadlines and communication from their Form Tutor.
- Encourage your child to develop good study habits- discuss a schedule with them.
- Encourage your child to attend period 6 opportunities.



Resilience



Pride



Respect



Ambition



Responsibility

**Vision – Be Exceptional**

# All Subject Curriculum Plans



- Browse through the school website for the individual curriculum plans for your child this academic year.
- All students are responsible for their own exercise books and will be taking them home to support with home learning and revision- ask your child about their learning compared to the curriculum plan.
- <https://www.astonacademy.org/page/?title=Subject+Areas&pid=55>



Resilience



Pride



Respect



Ambition



Responsibility

**Vision – Be Exceptional**





# Post 16 Options

## Aston Academy Post 16 Team

Mr Esberger, Mrs Ward, Mr Hall and LPM Ms Layden

## Broad Range of A-level and Vocational Courses

Including new subjects Psychology, Forensic Science, Criminology, Sociology and Politics.

For more information speak to your Year 11 teaching staff, a member of the Post 16 team or Mr Shaw, our Careers Advisor.

**Our Post 16 Open Evening is on Tuesday 14th November - Come and visit Post 16**



Resilience



Pride



Respect



Ambition



Responsibility

**Vision – Be Exceptional**



# Parental Support



- **Pre-Loved Uniform**
- **Free- school meals** Free school meals – Rotherham Metropolitan Borough Council
- **Family Support** - They can offer a wealth of family support or can signpost out to other agencies if they are unable to help Family Support – Rotherham Metropolitan Borough Council
- **Contact us** at [info@astonacademy.org](mailto:info@astonacademy.org)



Resilience



Pride



Respect



Ambition



Responsibility

**Vision – Be Exceptional**