

Y11 Parent/Carer Information Evening



Resilience



Pride



Respect



Ambition



Responsibility

Vision – Be Exceptional



Tonight...



- Key dates for the year ahead
- How you can support your child at home
- How you can support your child in school
- What to expect from Year 11



Resilience



Pride



Respect



Ambition



Responsibility

Vision – Be Exceptional

Welcome



Ms L Greaves
Assistant Vice Principal

Mrs C Alcock
SENDCO

Ms S Flint
Pastoral Learning Lead

Ms L Morgan
Assistant SENDCO

Mr P Scantlebury
Learning Progress Manager



Resilience



Pride



Respect



Ambition



Responsibility

Vision – Be Exceptional

Academic Progress and Key Dates



- Parents Evenings - 9th October 2023 and 5th February 2024
- Data Collection 1 (07/12/2023), Data Collection 2 (22/02/2024), Data Collection 3 (28/03/2024)
- Trial Exams - w/c 13/11/2023 for 2 weeks
 - w/c 22/01/2023
 - w/c 11/03/2024
- **GCSEs - start on 9th May 2024 and end on 26th June 2024.**
- **Please book holidays from 27th June 2024 onwards.**



Resilience



Pride



Respect



Ambition



Responsibility

Vision – Be Exceptional

Curriculum Design at Aston



- **The curriculum allows more flexibility**- students are timetabled in half year groups and can move between sets as and when their teacher feels appropriate for their academic progress.
- The curriculum design at Aston now allows students to have **equal access to curriculum** pathways, sets and opportunities moving through the school.
- The curriculum design **allows for academic changes** in your child as they journey through their final year.



Resilience



Pride



Respect



Ambition



Responsibility

Vision – Be Exceptional

Y11 Curriculum



To ensure that the academy delivers an **ambitious curriculum** that continues to **raise aspirations and standards for all groups of learners** in every school year.

Core:

English Language
English Literature
Mathematics
Science (Double/ Triple)

EBacc:

MFL (French/Spanish)
History
Geography

Other subjects:

RE
Business
IT
Psychology
Sociology
Drama
PE
Drama
Music
Art/ Photography
DT/ Textiles
Hospitality and Catering
Health and Social Care



Resilience



Pride



Respect



Ambition



Responsibility

Vision – Be Exceptional

Assessment and Data Reports



- All students in Key Stage 4 (Y10/11) will be assessed using the same process:
 - Classwork/live marking- Assessment for learning, continuous in class
 - Milestone assessments in class (formative, low stakes assessments)
 - Summative Assessments at the end of a learning journey- these include Trial Exams
- Data Reports will be sent out three times in Y11 where, for each subject they are studying, students will get the following:
 - Estimated grade
 - Character in the Classroom score



Resilience



Pride



Respect



Ambition



Responsibility

Vision – Be Exceptional

Y11 Trial Exams



- Trial Exams - w/c 13/11/2023 for 2 weeks
 - w/c 22/01/2023
 - w/c 11/03/2024
- Important in the learning journey of your child.
- Allow reflection of learning when assessed in a formal setting.
- Ensures students understand the process and are used to accessing the support.
- Relieves anxiety regarding the exam process and builds resilience.



Resilience



Pride



Respect



Ambition



Responsibility

Vision – Be Exceptional

Exam Support for Your Child



- Revision Booklet
- Online resources shared through Google Classroom
- Exam boosters- day before the exam
- Exam breakfasts
- Exam briefings before every exam
- Feedback and response lessons



Resilience



Pride



Respect



Ambition



Responsibility

Vision – Be Exceptional

Y11 Period 6 3.10-4.10pm



- Mondays- Independent Study (Library 3:10- 4pm)
 - Tuesdays- Maths
 - Wednesday- Humanities/ MFL
 - Thursday- Science
 - Friday- English
 - *(Options subjects at specific times of year)*
-
- Targeted intervention
 - Open invite to others
 - Between now and the GCSE exams starting, this equates to 1 week of full time learning EXTRA, PER SUBJECT.



Resilience



Pride



Respect



Ambition



Responsibility

Vision – Be Exceptional

The Importance of Attendance



Resilience



Pride



Respect



Ambition



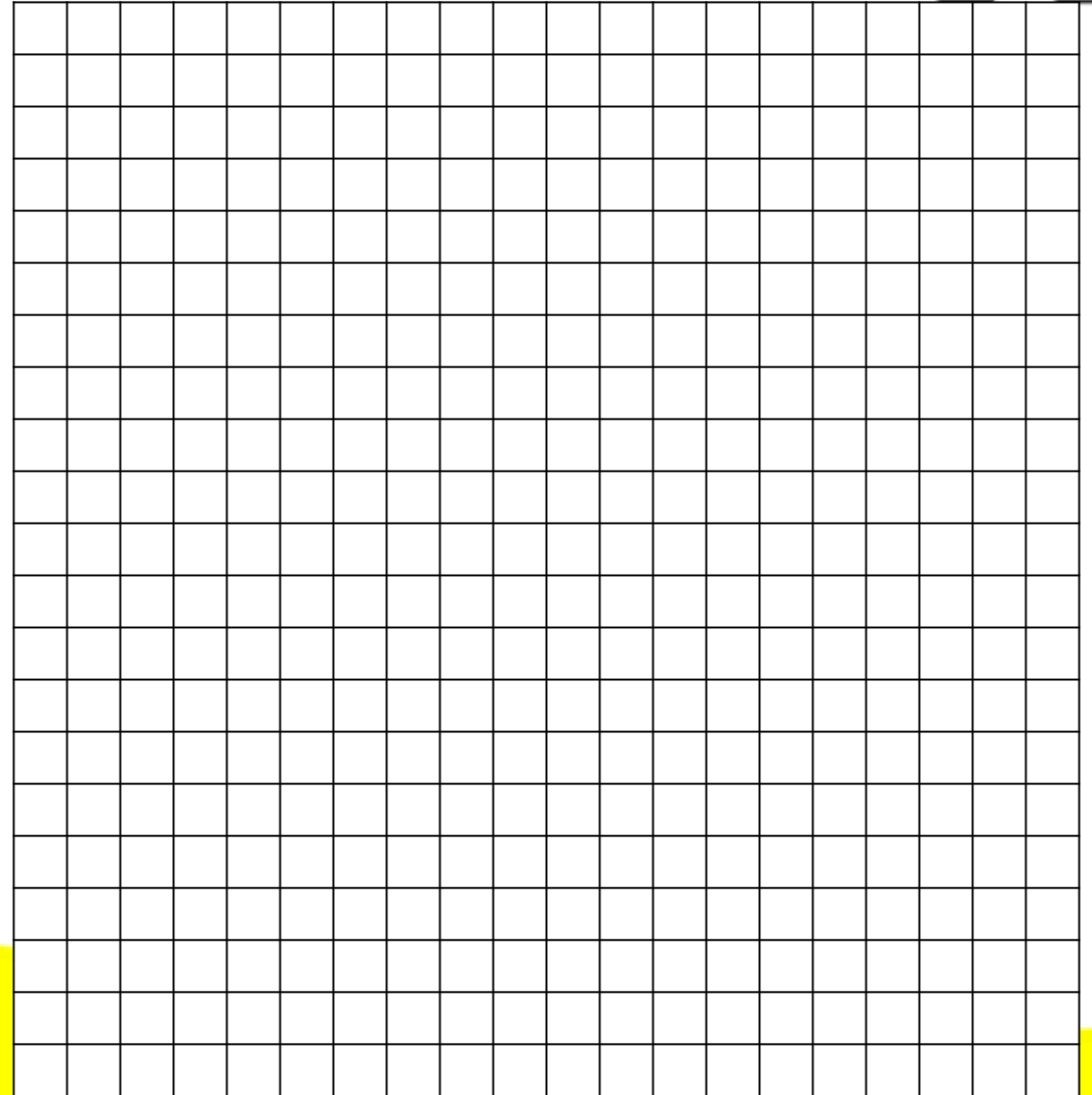
Responsibility

Vision – Be Exceptional



100% Attendance

- ✓ Each square represents a school week.
- ✓ Square one is your child's first week in Reception.
- ✓ The final square is the week of their final GCSE exam.



Resilience



Pride



Respect



Ambition

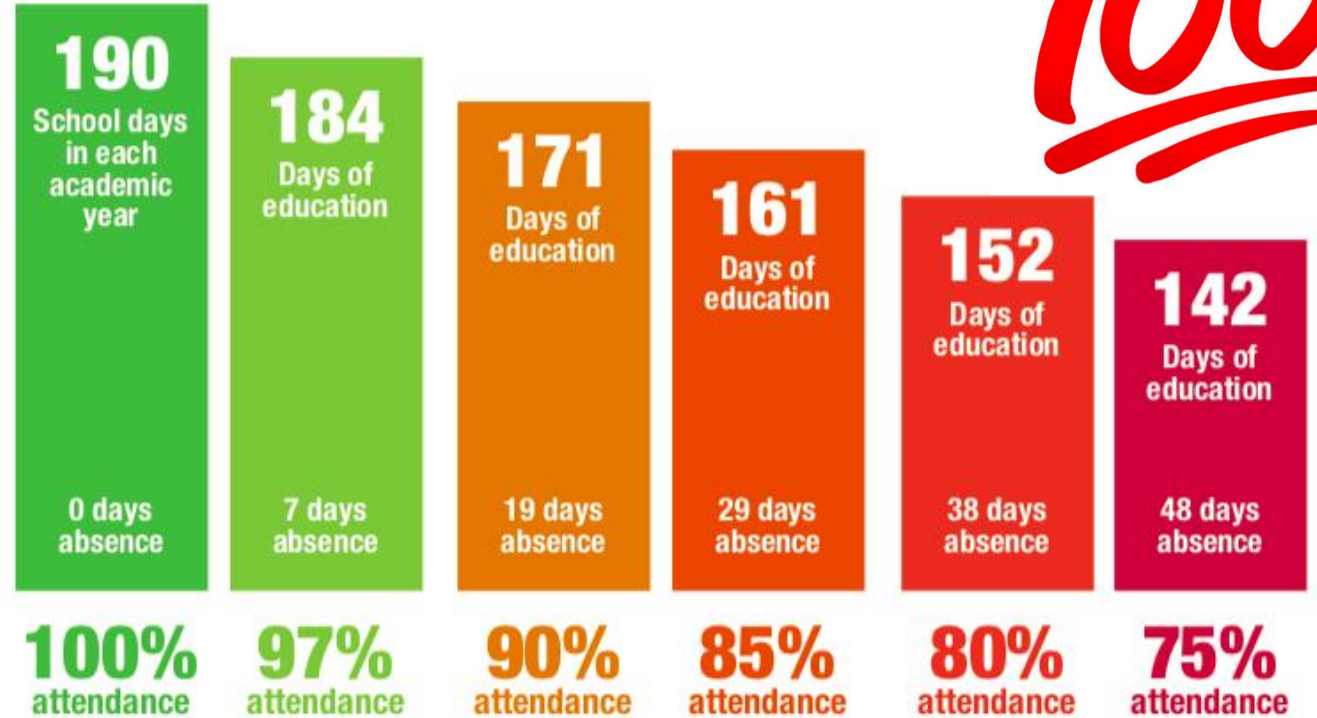
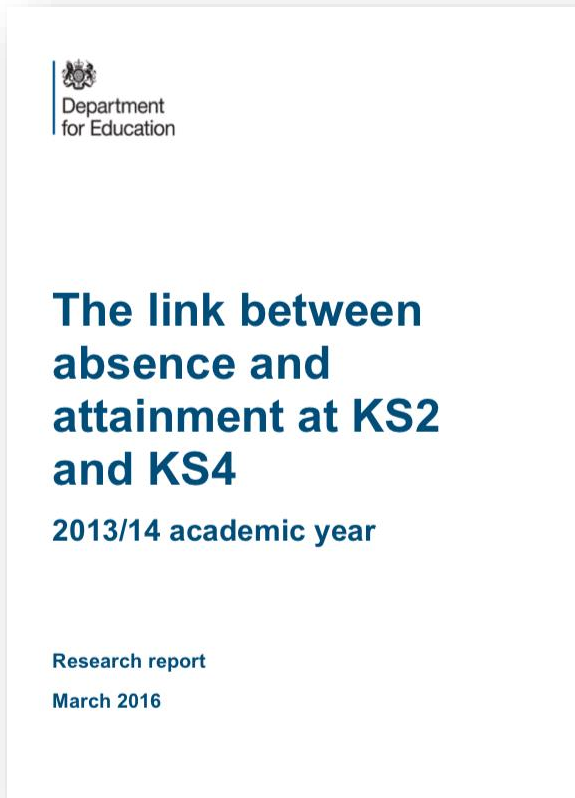


Responsibility

The Importance of 100% Attendance



100



Research Report - Link between absence and attainment



Resilience



Pride



Respect



Ambition



Responsibility

Vision – Be Exceptional

The Importance of 100% Attendance



Key points for Y11 Parents:

- Please get in touch if you are concerned that illness or injury may result in non-attendance; there is lots we can do to support your child remaining in school.
- Year 11s will be working hard on new content in every single lesson; one missed day means 5 hours of lost learning.
- Independent 'catch-up' will never match being in front of specialist teachers.

100

**Attend
and
Achieve**



Resilience



Pride



Respect



Ambition



Responsibility

Vision – Be Exceptional

Student Wellbeing

ASTON

Help & Support

- Talking to people can make a big difference. Talk to friends, family, teachers, form tutors and other staff in school.
- Remember to try and live a healthy lifestyle - get enough sleep, eat well and exercise.
- Keeping things to yourself will not solve the problem.
- Practice mindfulness, or other techniques that allow you to relax.
- **Kooth are a free support provision, with a variety of tools to help support your child.**



Resilience



Pride



Respect



Ambition



Responsibility

Vision – Be Exceptional

Core Subject Information: Maths, English, Science



Resilience



Pride



Respect



Ambition



Responsibility

Vision – Be Exceptional



Y11 Maths Curriculum

ASTON

Algebra

Statistics

Geometry

Number

Ratio

Exam Board: OCR. Tiers: Foundation (Grades 1 to 5) & Higher (Grades 3 to 9)

Students will cover any unseen content across the 5 golden threads in the first two terms of the year whilst also interleaving consolidation and revision of prior knowledge. Students will sit regular milestones every couple of weeks in maths, enabling us to monitor progress closely and address any gaps in knowledge.

Students will create revision guides at the end of each block of learning (roughly every 3 weeks) which will be a useful tool to help direct their revision to areas of development.



Resilience



Pride



Respect



Ambition



Responsibility

Vision – Be Exceptional

Y11 Maths Curriculum



Algebra

Statistics

Geometry

Number

Ratio

The first full complement of trial exams in November will enable us all to know exactly where students are at and will highlight clearly areas for development to allow maximum progress to be made. *There will still be some topics that have not been covered at this time and this is not something to be concerned about.

Three exam papers: Paper 1: Calculator, Paper 2: Non-Calculator, Paper 3: Calculator.

There are no specific topics that could come up on any paper. We prepare for topics that are more likely to come up on Calculator or Non-Calculator papers but there is never a guarantee. All lessons are important but after each exam in May/June we specifically focus our lessons on topics that have not yet been examined.



Resilience



Pride



Respect



Ambition



Responsibility

Vision – Be Exceptional

Calculators

ASTON

- A vital part of the student equipment list is a scientific calculator.
- 2 out of 3 GCSE Maths Papers will require use of a calculator. Lessons, milestones and assessments will reflect this.
- It is an expectation that students bring their own calculator every day.
- We recommend the **Casio FX83GT CW** at most supermarkets [released July 2023].
- Students with the Casio FX83GTX or Casio FX95 do not need to purchase new calculators.



Resilience



Pride



Respect



Ambition



Responsibility

Vision – Be Exceptional

How can you support your child in Maths



Catch up with your child about what they're learning about. Encourage them to share any areas for development with their teachers and ask for support in improving on these. Please get in touch if there is anything you need too.

Maths homework is moving to an online programme called Sparx. They will be set weekly homework - check in with them how they're getting on. They will be able to use their books to help them complete this as it runs alongside our curriculum. There are 100s of videos to help improve student understanding if they are finding a topic particularly challenging or to help extend their knowledge further. Y11 students will also receive a mixture of the online and paper based homework.

In addition to resources provided to students. Revision guides, workbooks and revision cards are all available for purchase - Check the exam board [OCR] and tier of your child carefully.



Resilience



Pride



Respect



Ambition



Responsibility

Vision – Be Exceptional

Y11 English Language Curriculum



Y11 English Language - one of their two GCSEs

Exam board: Eduqas

Two exams - *provisionally* 23/5/24 and 6/6/24

Paper 1 - Reading – 40 marks – 1 hour	Writing – 40 marks – 45 minutes
<p data-bbox="326 601 1026 651">Reading of an unseen fiction text</p> <p data-bbox="122 796 1230 975">Five reading questions to assess skills in information retrieval, commenting on the effect of language, and evaluating a statement</p>	<p data-bbox="1276 601 2415 651">Select one of four titles from options and write a story.</p> <p data-bbox="1727 796 1964 839">45 minutes</p> <p data-bbox="1383 991 2313 1103">Spelling, punctuation, and grammar marked alongside ideas, content, and vocabulary</p>



Resilience



Pride



Respect



Ambition



Responsibility

Vision – Be Exceptional

Y11 English Language Curriculum



Y11 English Language - one of their two GCSEs

Exam board: Eduqas

Two exams - *provisionally* 23/5/24 and 6/6/24

Paper 2 Reading – 40 marks – 1 hour	Writing – 40 marks – 1 hour
<p data-bbox="338 639 991 675">Reading of two unseen non-fiction texts</p> <p data-bbox="193 805 1133 891">Six reading questions testing ability to understand writers' perspectives</p> <p data-bbox="129 1021 1195 1106">Assesses ability to compare, retrieve the correct information, and comment on the effect of language</p>	<p data-bbox="1569 639 2099 675">Two pieces of non-fiction writing</p> <p data-bbox="1523 805 2145 841">A letter, speech, article, review, report</p> <p data-bbox="1304 971 2364 1056">Marked for content, ideas, sense of purpose, how convincing the writing is, alongside spelling, punctuation, and grammar</p>



Resilience



Pride



Respect



Ambition



Responsibility

Vision – Be Exceptional

Speaking and Listening

A 'Non-Exam Assessment' / 'Endorsement' has to also be completed to assess students' ability in speaking and listening.

This involves a five minute speaking presentation delivered by the student, alongside a series of questions.



Resilience



Pride



Respect



Ambition



Responsibility

Y11 English Literature Curriculum



Y11 English Literature - the second of their two GCSEs

Exam board: Eduqas

Two exams - *provisionally* 13/5/24 and 20/5/24

English Literature Paper 1 – 2 hours -

40% of GCSE

Shakespeare – ‘Macbeth’ – 1 hour	Poetry Anthology – 1 hour
2 questions	2 questions
One extract analysis	One analysis of a named poem and how ideas are presented
One whole play analysis	One comparison question between the named poem and a poem of choice from the anthology



Resilience



Pride



Respect



Ambition



Responsibility

Vision – Be Exceptional

Y11 English Literature Curriculum



Y11 English Literature - the second of their two GCSEs

Exam board: Eduqas

Two exams - *provisionally* 13/5/24 and 20/5/24

English Literature Paper 2 – 2 hours 30 minutes – 60% of GCSE

'An Inspector Calls' – 45 minutes	19 th Century Prose – 'A Christmas Carol' or 'Jekyll and Hyde' – 45 minutes	Unseen Poetry – 1 hour
1 question One essay question on an extract and the rest of the play	1 question One essay question on an extract and the rest of the novella	2 questions Q1 Comment on the first poem and how the poet presents their ideas Q2 – 40 minutes Compare the first poem with a second and how each poet presents their ideas



Resilience



Pride



Respect



Ambition



Responsibility

Vision – Be Exceptional

How can you support your child in English



English Language:

Revision of prepared stories - rewrite from memory

Encouraging the reading of a wide variety of texts, both fiction and non-fiction - novels, short stories, newspapers, online blogs, reviews, opinion pieces

Completion of any incomplete classwork

Time for timed answers at home

Attendance at revision/booster sessions/intervention

English Literature:

Revision of quotations - Macbeth, poetry anthology, Jekyll and Hyde or A Christmas Carol, An Inspector Calls

Online videos - YouTube - Mr Bruff/BBC Bitesize

Revision guides - second-hand online

Timed essay practice

Attending productions

Discussion of lesson content/ regularly reviewing classwork

Attendance at revision/booster sessions/intervention



Resilience



Pride



Respect



Ambition



Responsibility

Vision – Be Exceptional

Y11 Science Curriculum

Knowledge and skill structure around the Big Ideas in science

11G and 11P AQA Combined Science (Trilogy)	11Y AQA Separate Sciences
2 GCSE graded from 3-3 to 9-9 on the higher tier and 1-1 to 5-5 on the foundation tier	3 GCSEs graded from 3-9 (H) and 1-5 (F)
6 Written papers- 2 Biology, 2 Chemistry and 2 Physics	
1hr 15mins 21 Required practicals	1hr 45mins 28 Required practicals

Key Dates

- November trial exams - Physics Paper 1 for 11GP and Paper 1s for 11Y
- Tiering decisions are finalised in March



Resilience



Pride



Respect



Ambition



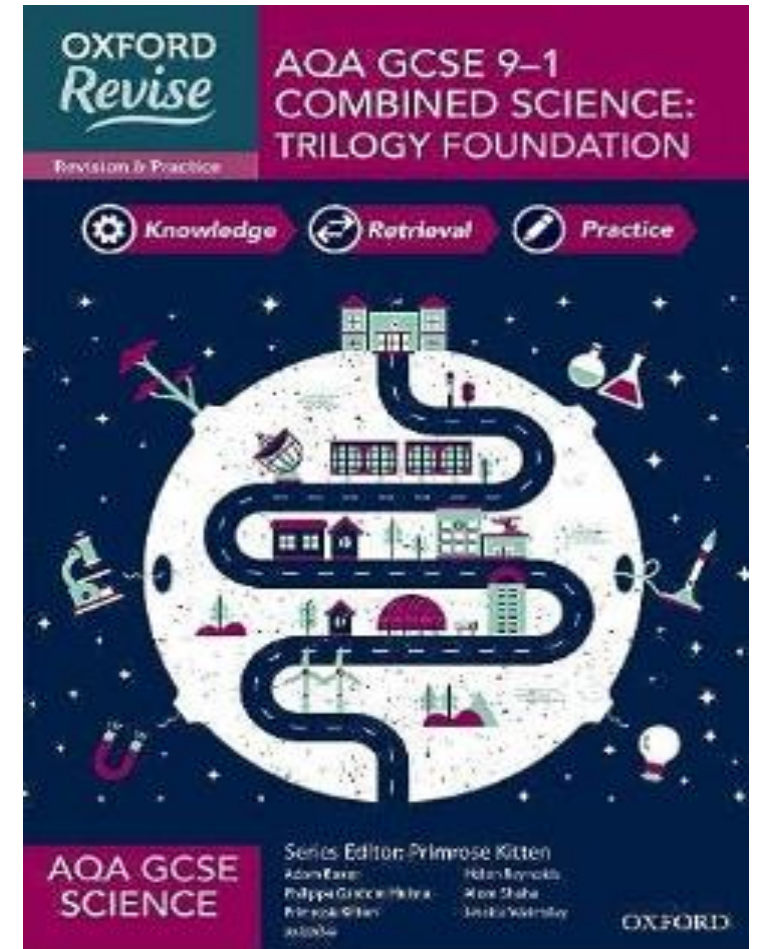
Responsibility

Vision – Be Exceptional

How can you support your child in Science

ASTON

- Support them with beginning active revision now- make a timetable with small chunks of revision
- Check their exercise book and test them on what they've learnt
- Are homework booklets completed every week with maximum effort?
- Suggested revision guide - AQA Oxford Revise series
- Scientific calculator are need in science too



Resilience



Pride



Respect



Ambition



Responsibility

Vision – Be Exceptional

General support at home



- Discuss your child's learning with them - use the curriculum journeys as a starting point (website).
- Ensure your child has the correct equipment needed for school.
- Check your child's planner for home learning, deadlines and communication from their Form Tutor.
- Encourage your child to develop good study habits- discuss a schedule with them.
- Encourage your child to attend period 6 opportunities.



Resilience



Pride



Respect



Ambition



Responsibility

Vision – Be Exceptional

All Subject Curriculum Plans



- Browse through the school website for the individual curriculum plans for your child this academic year.
- All students are responsible for their own exercise books and will be taking them home to support with home learning and revision- ask your child about their learning compared to the curriculum plan.
- <https://www.astonacademy.org/page/?title=Subject+Areas&pid=55>



Resilience



Pride



Respect



Ambition



Responsibility

Vision – Be Exceptional



Post 16 Options

Aston Academy Post 16 Team

Mr Esberger, Mrs Ward, Mr Hall and LPM Ms Layden

Broad Range of A-level and Vocational Courses

Including new subjects Psychology, Forensic Science, Criminology, Sociology and Politics.

For more information speak to your Year 11 teaching staff, a member of the Post 16 team or Mr Shaw, our Careers Advisor.

Our Post 16 Open Evening is on Tuesday 14th November - Come and visit Post 16



Resilience



Pride



Respect



Ambition



Responsibility

Vision – Be Exceptional

Parental Support



- **Pre-Loved Uniform**
- **Free- school meals** Free school meals – Rotherham Metropolitan Borough Council
- **Family Support** - They can offer a wealth of family support or can signpost out to other agencies if they are unable to help Family Support – Rotherham Metropolitan Borough Council
- **Contact us** at info@astonacademy.org



Resilience



Pride



Respect



Ambition



Responsibility

Vision – Be Exceptional